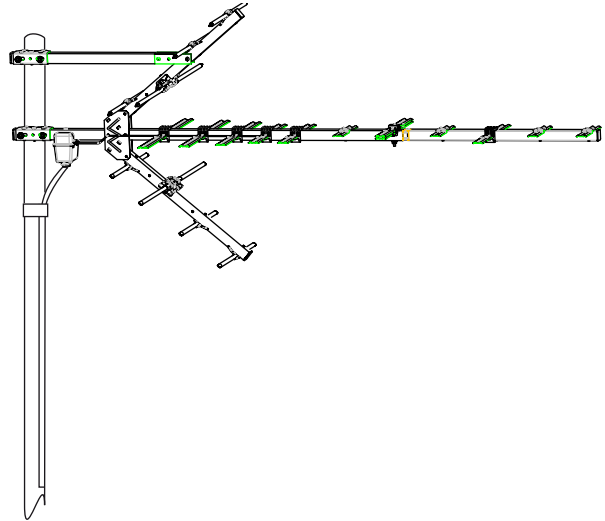




**PLATINUM SERIES  
HIGH DEFINITION  
UHF  
ANTENNA**

**engineering specifications**

Model HD9075P



<b>Active Elements</b>	26	<b>Shpg. Weight</b>	6.0 lbs.
<b>Boom Length</b>	60"	<b>Carton Dimensions</b>	6.25"x6.25"x42"
<b>Turning Radius</b>	58"		
<b>Maximum Width</b>	27"		
<b>Vertical Height</b>	25.5"		
<b>Element Diameter</b>	3/8"		

**Output Impedance:** 75 ohm  
**Recommended Preamp:** AP Series



"UPS in shield design is a registered trademark of United Parcel Service of America, Inc. used by permission."

Made in U.S.A.

CHANNEL	CH.14	CH.32	CH.50	CH.69
<b>dB gain over reference dipole</b>	10.0	13.0	13.05	11.5
<b>beamwidth at half power points</b>	45°	44°	32°	23°
<b>front-to-back ratio</b>	14dB	18dB	12dB	9dB

**POLAR PATTERNS**

