

WINEGARD^Æ

Trouble Shooting for Moviní Viewô Model MV-0500

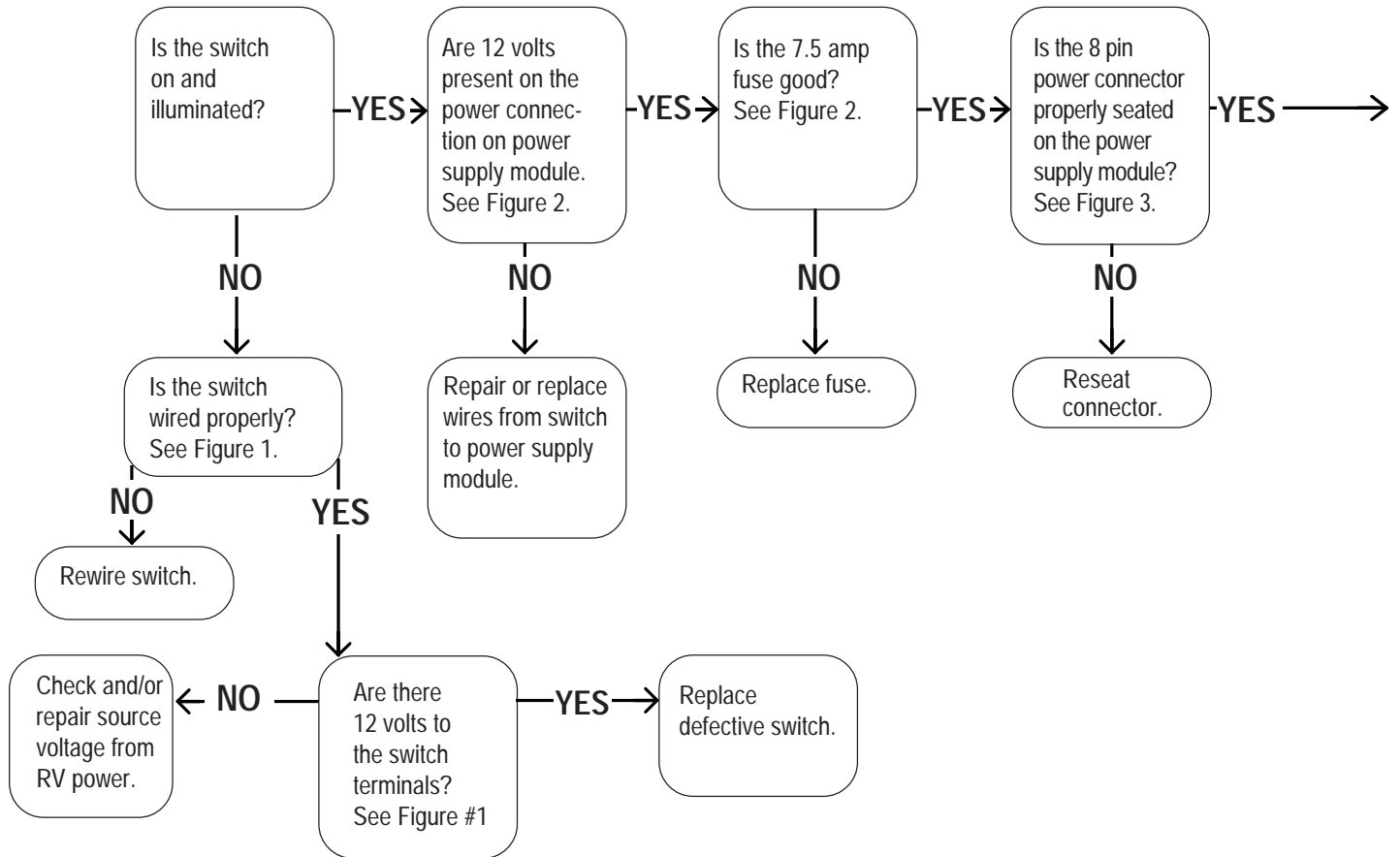
1. No movement after Power Up	2
2. Rotates only in azimuth direction	4
3. Moves only straight up and down, with no rotation	5
4. Produces grinding noise immediately before changing directions	6
5. No movement after home position routine completed. (No GPS acquisition)	7
6. Will not lock on signal after Home Position routine is complete and Search routine is begun	8



Trouble Shooting Guide

This guide will help you solve problems with Movin' View Model MV-0500. After following these steps, if you need further assistance, please call Winegard Technical Services at 800/788-4417.

I. No movement after Power Up



Note:

1. The source for 12 volts must be filtered.
2. If the motor connectors are installed upside down, damage to the control module may occur.
3. There is a red stripe on 8-pin connector housing. The red stripe must be up on power supply module and down on control module.

Figure 3



Figure 1

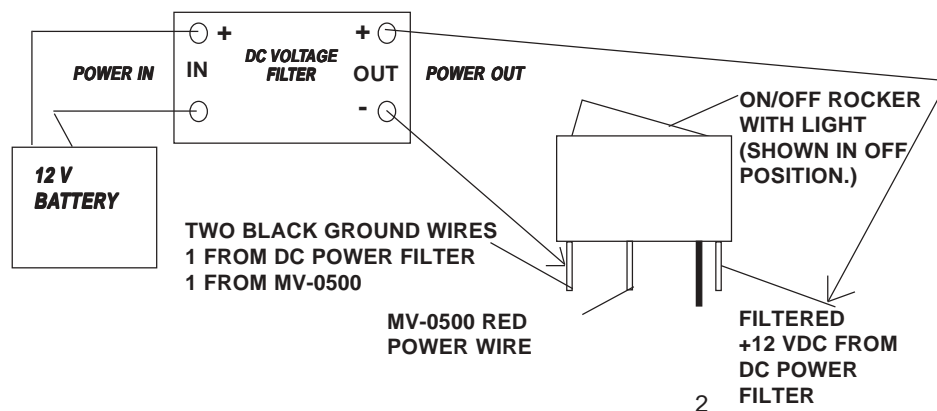


Figure 2



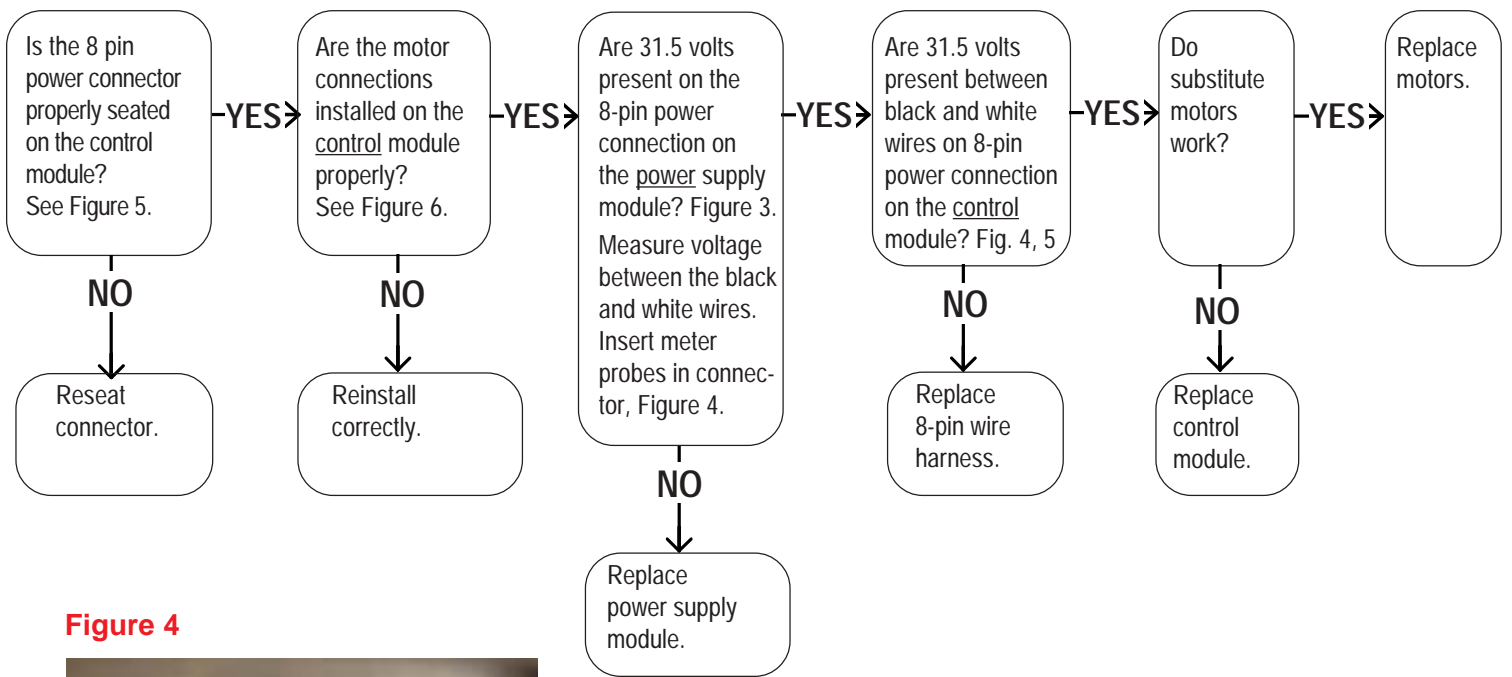


Figure 4



Figure 5



Figure 6



II. Only rotates in azimuth direction.

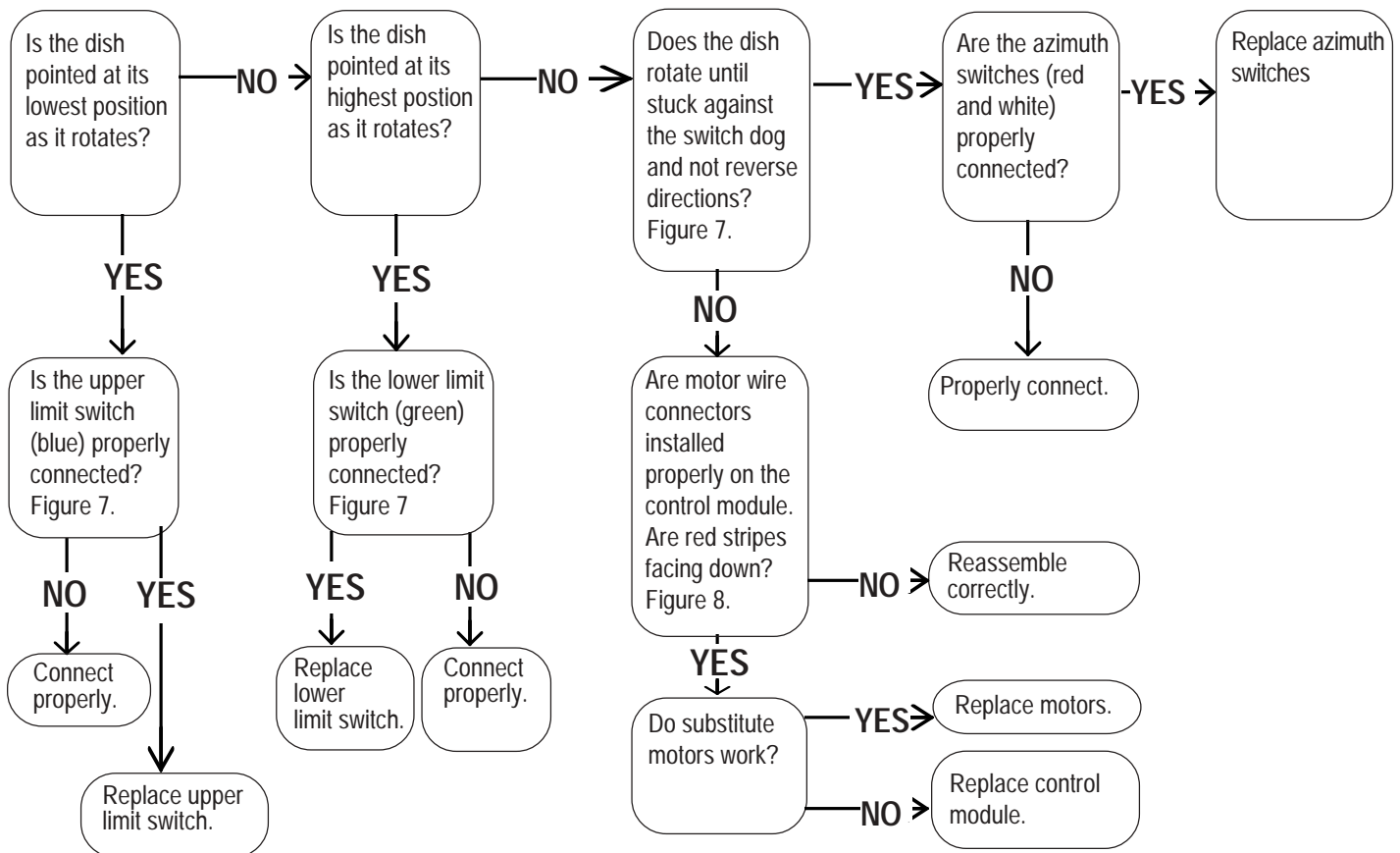
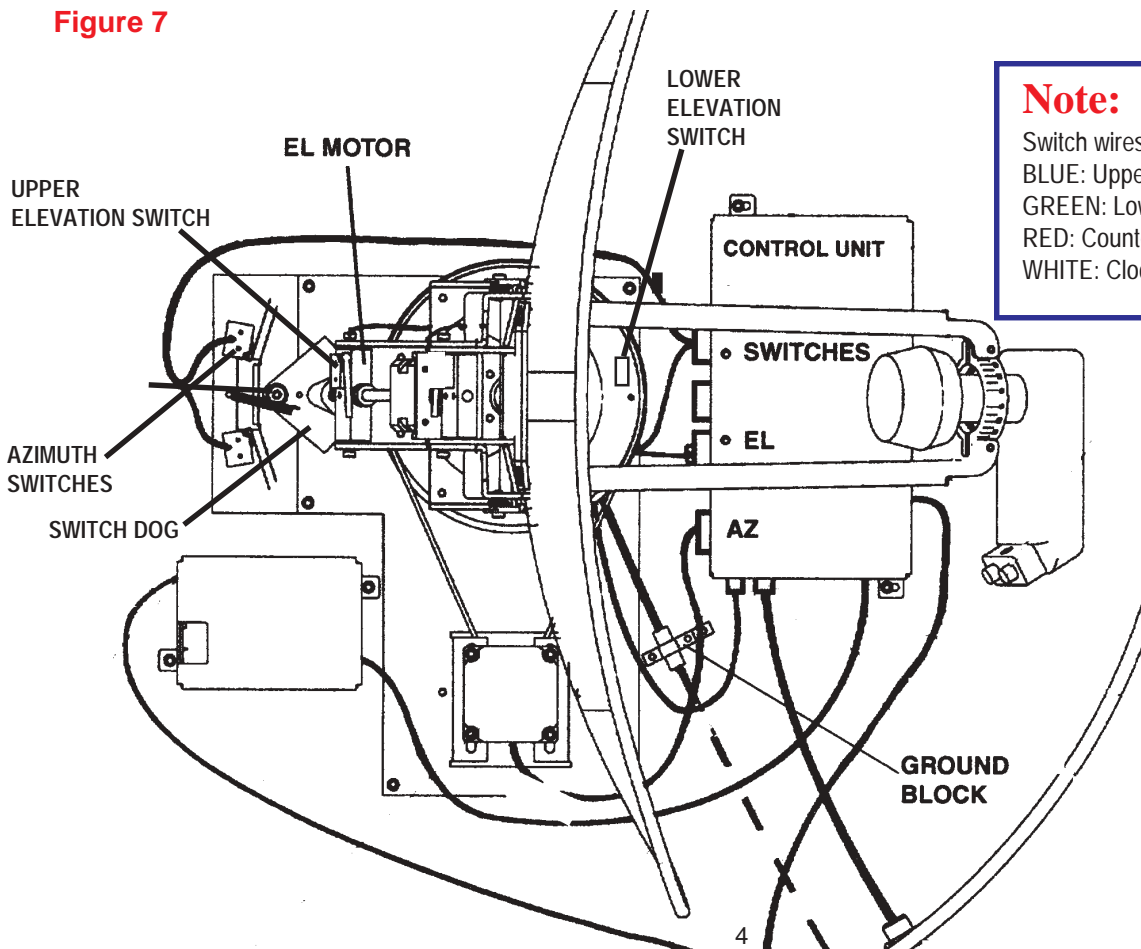


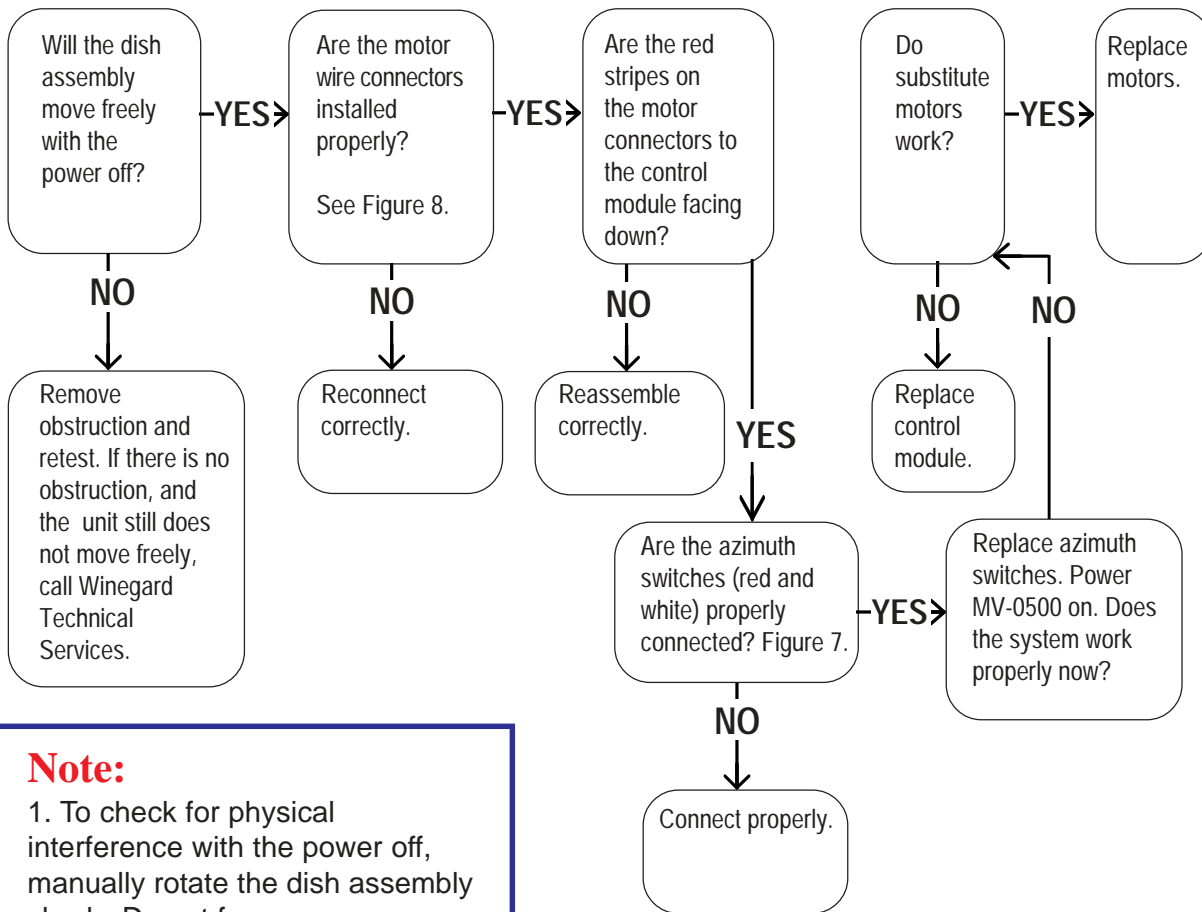
Figure 7



Note:

Switch wires are color coded:
 BLUE: Upper elevation switch
 GREEN: Lower elevation switch
 RED: Counter-clockwise azimuth switch
 WHITE: Clockwise azimuth switch

III. Moving straight up and down, with no rotation.

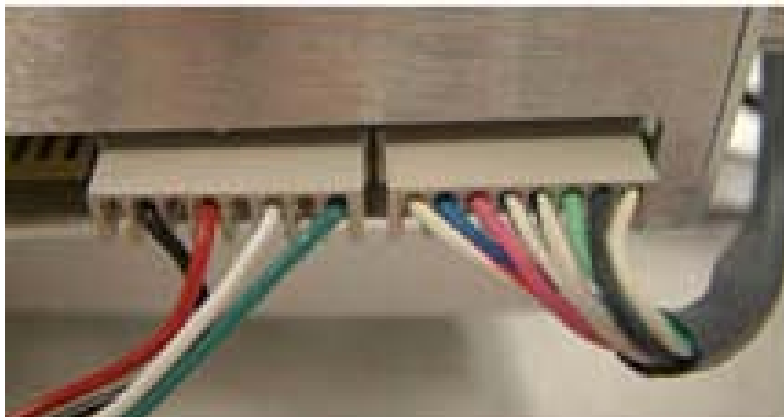


Note:

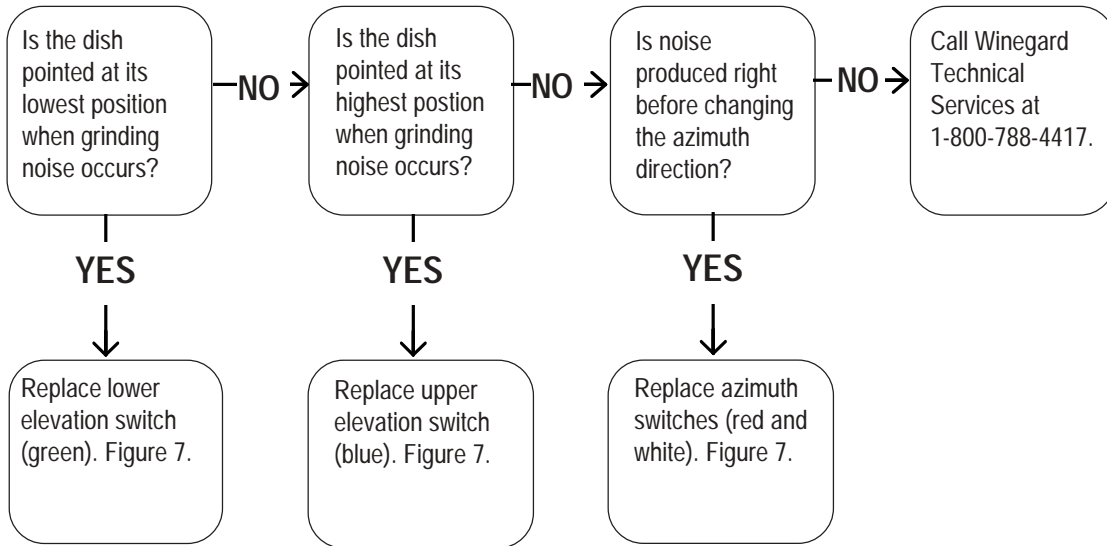
1. To check for physical interference with the power off, manually rotate the dish assembly slowly. Do not force.

With power off, the motors should move freely.

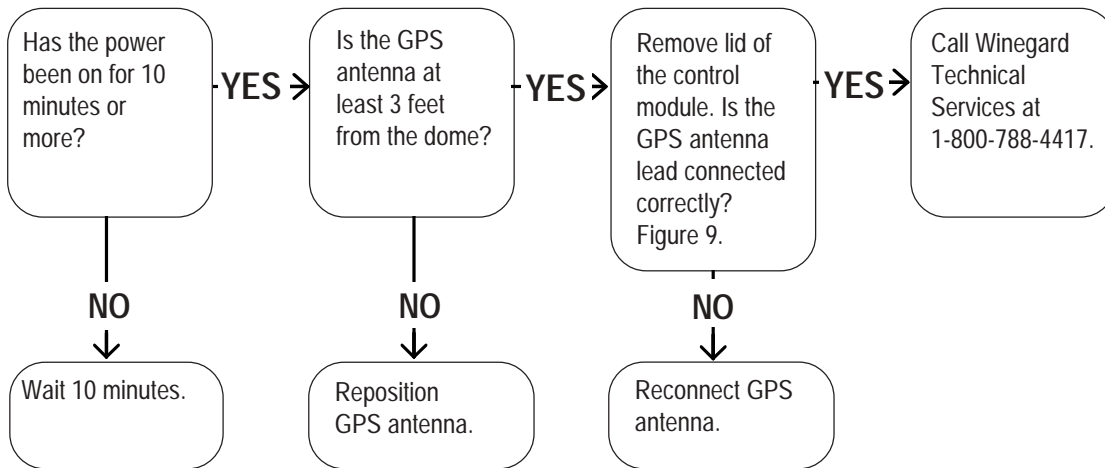
Figure 8



IV. Produces grinding noise immediately before changing directions.



V. No movement after home position routine completed. (No GPS acquisition)



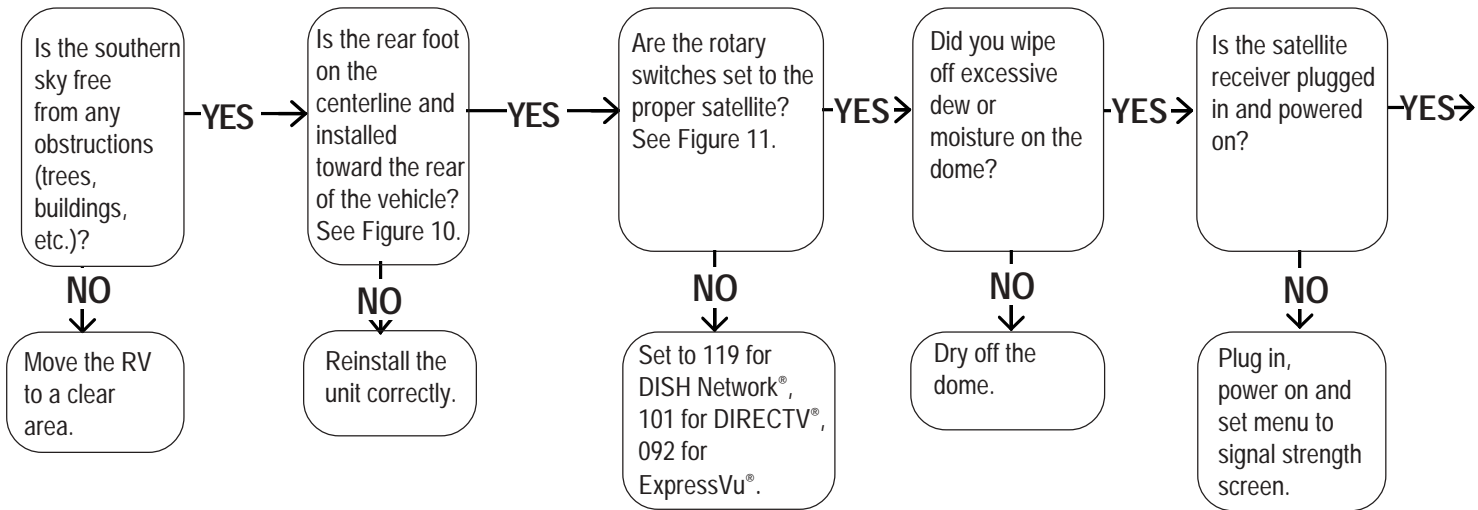
Note:

If the vehicle has traveled 600 miles or more since the last use of the MV-0500, GPS acquisition may take longer.

Figure 9



VI. Will not lock on signal after Home Position routine is complete and Search routine is begun.



Note:
If the unit searches continuously for more than 20 minutes, move power directly to a reliable, fully charged battery.

Figure 10

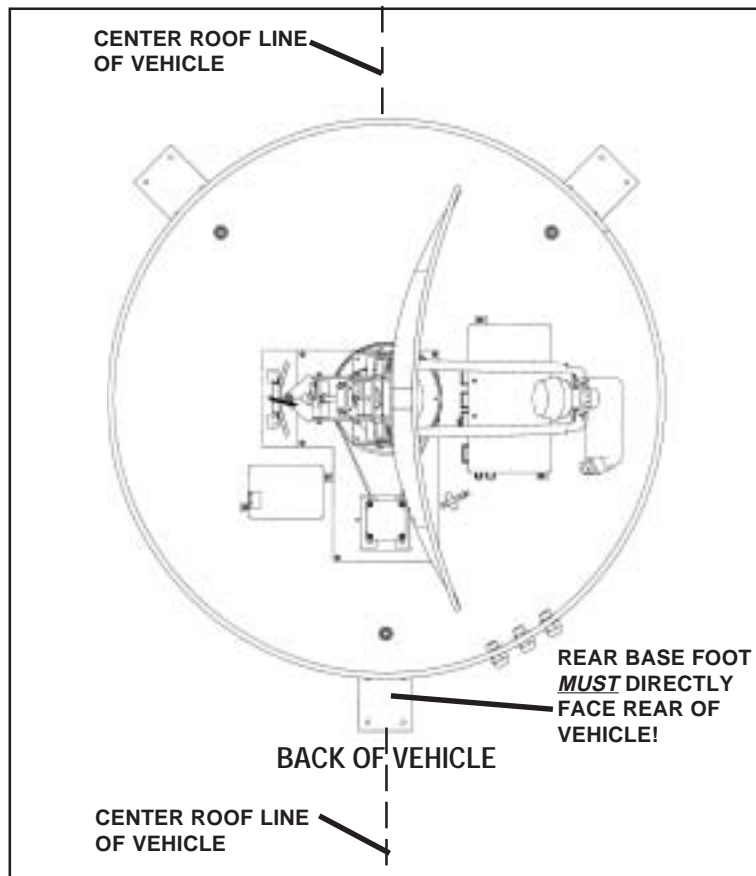
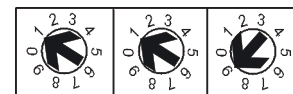
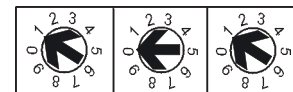


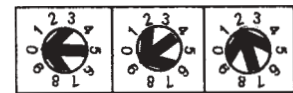
Figure 11



For DISH Network™ set switches to 119°.



For DIRECTV® set switches to 101°.



For ExpressVu® set switches to 092°.

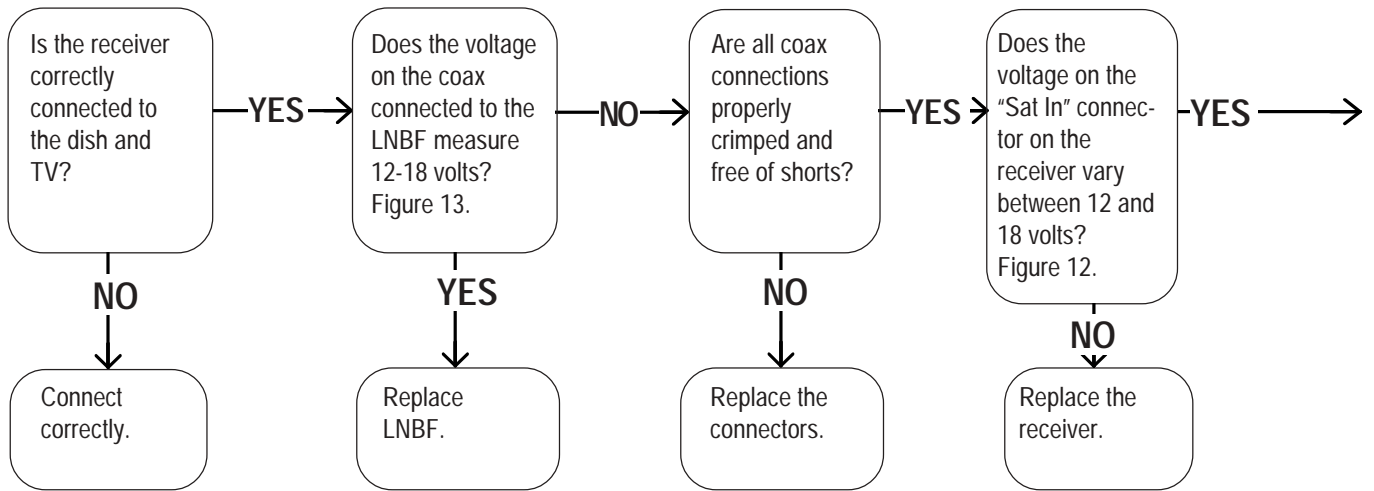


Figure 12



Figure 13



Note:

Don't try to insert your test meter probes into the coax connectors. This will cause permanent damage to the connectors. Use a short piece of coax with a connector on one end, or TE-1400 voltage tester (available from your Winegard Distributor. See Figure 16.

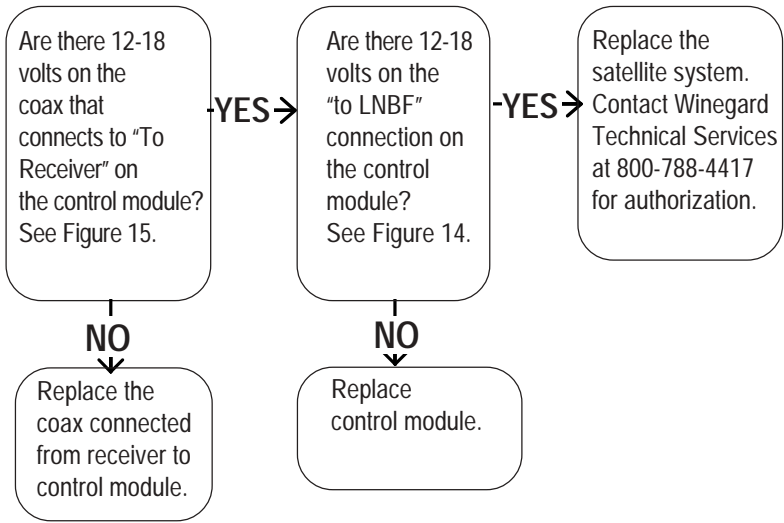


Figure 14



Figure 15



Figure 16



