

# WINEGARD®

## MODEL RS-1500

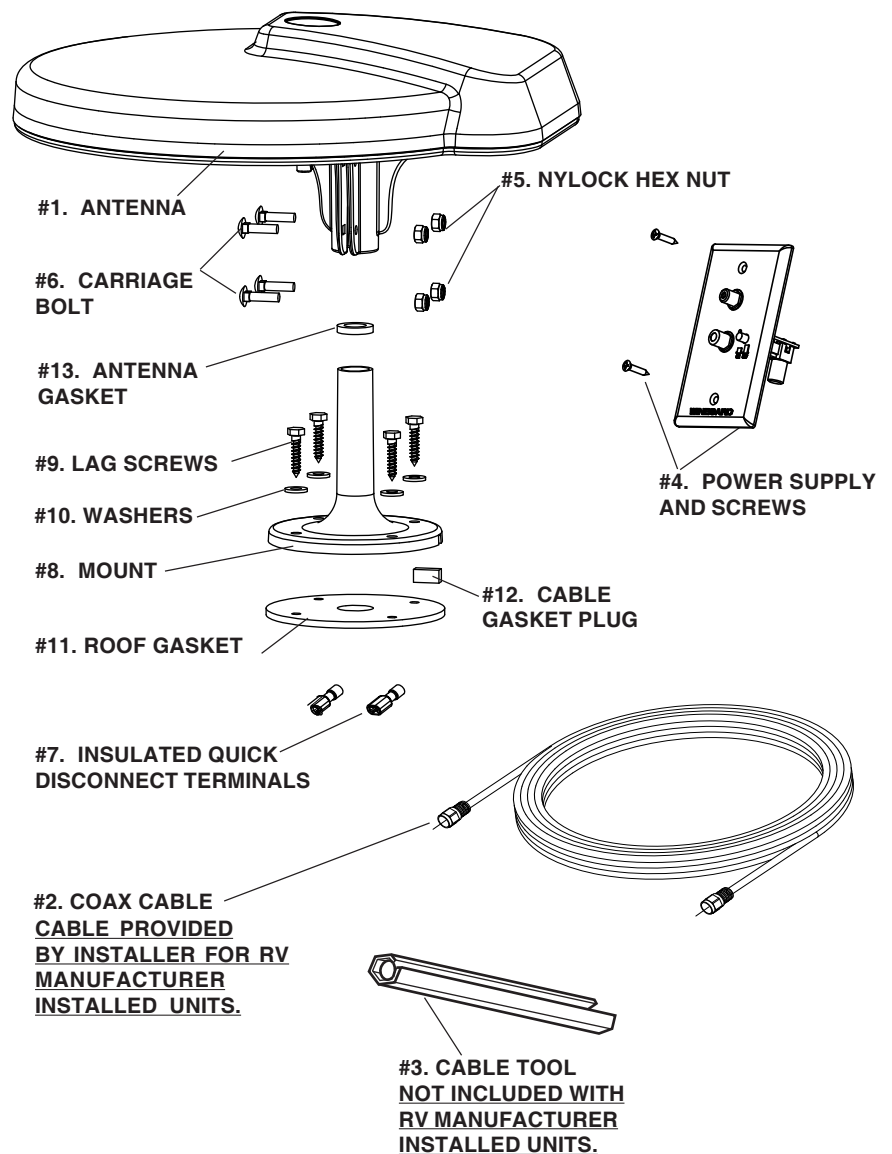
### OMNIDIRECTIONAL TV/FM ANTENNA

**NOTE:** Please read all instructions **before** beginning installation!

**WARNING!**  
**To prevent FIRE or SHOCK HAZARD, avoid exposure of power supply to moisture.**

#### PARTS LIST

1. (1) Antenna
2. (1) 15' RG-6 Low Loss Coax Cable
3. (1) Cable Tool
4. (1) Power Supply RV-7542
5. (4) 1/4-20 Nylock Hex Nuts
6. (4) 1/4-20 Carriage Bolts
7. (2) Insulated Quick-Disconnect Terminals
8. Mount
9. (4) Lag Screws 1/4" x 1/4"
10. (4) Washers 1/4"
11. (1) Roof Gasket
12. (1) Cable Gasket Plug
13. (1) Antenna Gasket



#### TOOLS NEEDED

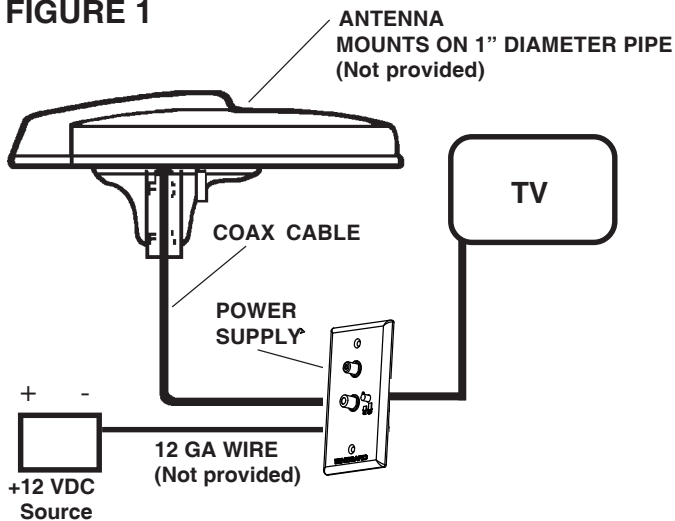
- #2 Phillips screwdriver
- 7/16" wrench
- Medium slot screwdriver
- Cable tool
- Wire stripper

## BEFORE YOU MOUNT ANTENNA: Decide location of power supply before mounting your antenna.

A wiring diagram, Figure 1, will help you determine the location for your power supply and antenna. **Antenna and power supply location determines where and how you run cables.**

**DO NOT** begin installation before carefully reading all installation instructions.

**FIGURE 1**



### INSTALLING ANTENNA MOUNT

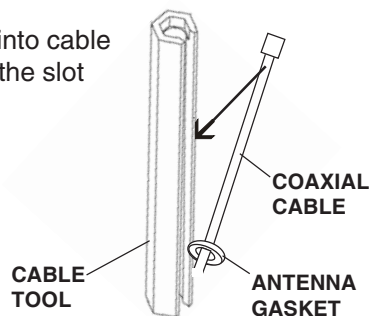
**OPTION 1:** Drill through roof and run cable up center of antenna mount. Use gasket and plug in antenna mount. Route cable (supplied) from antenna to wall plate.

**OPTION 2:** Run cable (supplied) along roof. Place through open slot at bottom of antenna mount. Route cable to wall plate.

**FOR BOTH OPTIONS:** Connect coax to antenna head. Next, screw mount down over gasket using screws provided. Use approved sealant to cover screw heads.

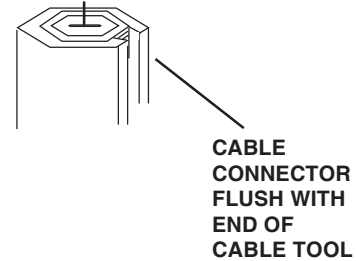
### CONNECTING COAX CABLE TO THE ANTENNA

1. Slide coax cable through antenna gasket. (The antenna gasket is in the middle of the large mount gasket; pull out.)
2. Slide coax cable into cable tool (#3) through the slot in the side of the tool, hex end up, Figure 2.



**FIGURE 2**

2. Pull the cable down until the end of the connector is flush with the hex-shaped end of the cable tool. See Figure 3.

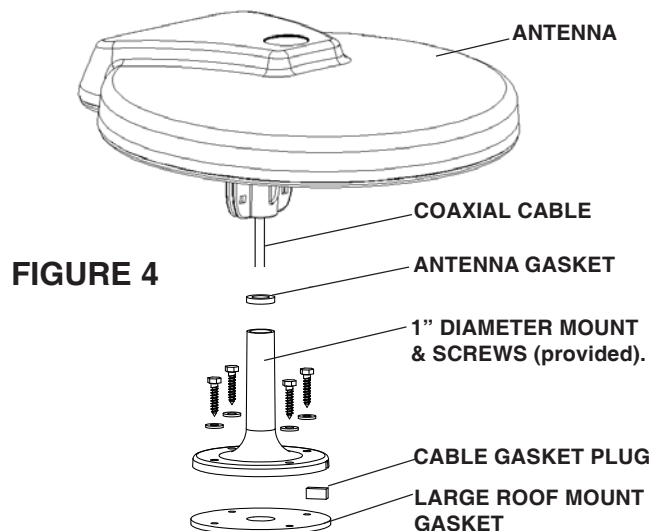


**FIGURE 3**

3. Insert the cable tool with cable attached into the mounting bracket on the underside of the antenna, aligning the end of the connector with the cable connection on the antenna. Push up until you feel a SLIGHT resistance.
4. Turn cable tool **to the right** until the connector is tight.
5. Remove cable tool.

### INSTALLING ANTENNA ON MOUNT

1. After cable connection is made, slide antenna gasket down coax to top of mount. Then slide antenna onto mount. GENTLY pull back any extra cable inside vehicle.
2. Fasten antenna to mast using 1/4-20 carriage bolts (#6) and nylock hex nuts (#5). Tighten firmly to prevent antenna from turning on mount or mast.



**FIGURE 4**

## CONNECTING POWER SUPPLY

1. Select location for power supply. Run two coax cables (three if Set 2 jack is going to be used) (RG-59 type) between locations and install connectors on each end. **Mark cables so "cable input", "TV output" "Set 2" may be identified.** Antenna download and +12 VDC also needed at inside power supply location. See wiring diagram, Figures 5 and 6.

2. To mount the power supply, cut a hole in wall to fit the power supply. Connect 2 #12 wires between power supply and +12 VDC source and route download cable to this location.

### CAUTION: TURN OFF POWER SUPPLY WHEN CONNECTING CABLES/WIRES!

3. Connect 12 VDC to wall plate/power supply. Install terminals on wires from +12 VDC source as shown in Figure 7.

4. Crimp terminals with crimping tool, Figure 8. Push wires onto tabs on terminal board as shown in Figure 6. If in doubt as to the polarity of the wires, connect them temporarily to tabs on circuit board and press ON switch on front of wall plate; if light comes on polarity is correct.

5. Install connectors on download, Set 2 and Cable Input cables. Attach download cable to jack on wall plate/power supply marked Antenna as shown in Figures 5 and 6. Attach cable going to Set 2 outlet to jack on power supply marked SET 2. Attach cable coming from cable input to jack on power supply marked CABLE.

5. Mount power supply in wall with screws provided; attach TV set cable to jack on front of power supply/wall plate. Press ON switch on front of wall plate and check that light is on.

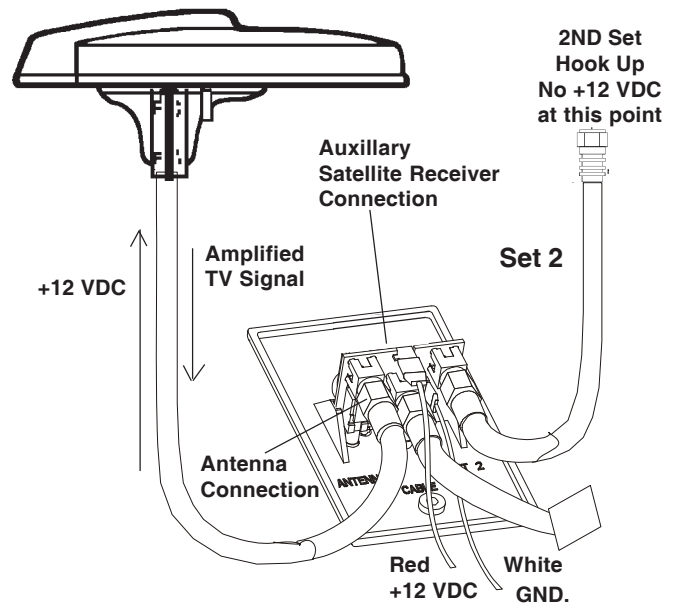
## CHECKING OPERATION OF POWER SUPPLY

1. Tune TV receiver to nearest station and rotate antenna for best picture and sound.

2. Press OFF switch on power supply. Picture on TV should be considerably worse with power off.

3. **This unit is equipped with a polyswitch** (current limiting device) which will shut down +12 VDC if there is a direct short between antenna and power supply. Red indicator light will not light. Once short is eliminated, device will reset itself.

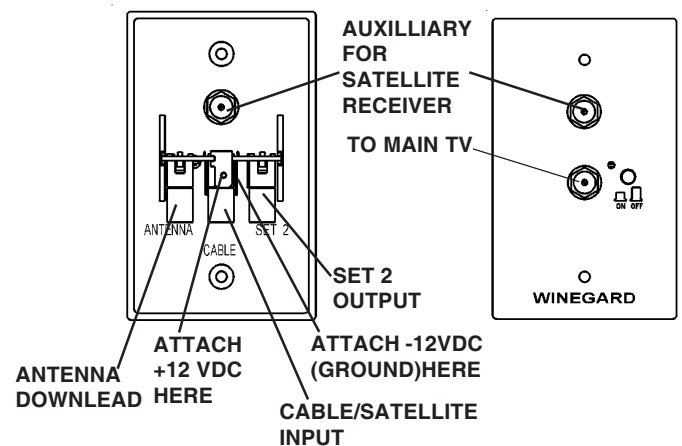
**FIGURE 5  
(Wiring diagram)**



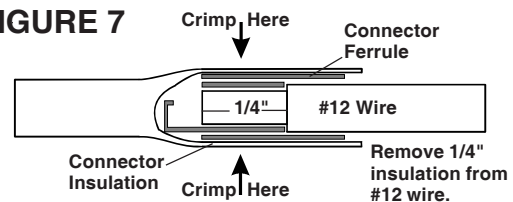
### IMPORTANT

*Positive and Negative leads from Battery must be connected to the control box terminals exactly as shown*

**FIGURE 6**



**FIGURE 7**



**FIGURE 8**

