

WINEGARD®

Model RK-CEIL Replacement Kit for Ceiling Hardware RD Models Only

Made in U.S.A.

ASSEMBLY STEP REQUIRED BEFORE INSTALLATION! See NOTE on other side.

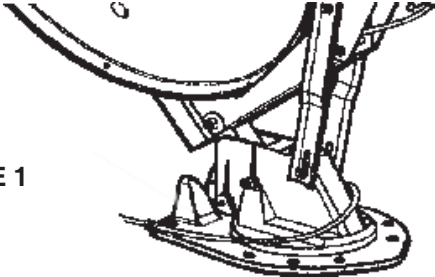


FIGURE 1

INSTRUCTIONS

STEP 1. While holding the crank handle in place, loosen the hex set screw on the crank handle.

STEP 2. Carefully remove all loose parts.

STEP 3. Remove 4 screws holding ceiling plate in place.

STEP 4. The mount is designed to fit roofs 1" to 4 3/4" thick. If roof is less than 4 3/4" thick, cut elevating shaft and directional handle to size, see table below.

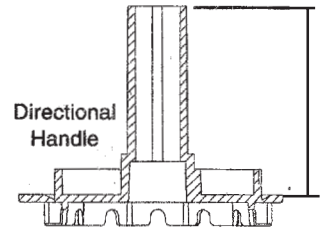
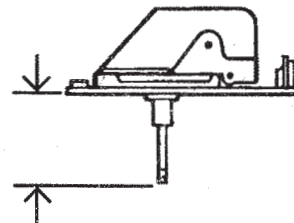
STEP 5. Assemble ceiling plate, directional handle and crank handle as shown in Figure 2. The circled numbers indicate placement from the ceiling down.

Example: The ceiling plate (#1) is located next to the ceiling. The elevation crank handle (#8) is farthest from the ceiling. The number also indicates sequence of assembly.

NOTE: When installing polyethylene shim, #3, slide shim onto shaft as far as it will go. Then slide directional handle up over shaft and shim and onto the gear housing. Two shims are supplied in case one is not enough to create a snug fit between directional handle and gear housing.
CAUTION: USE CAUTION WHEN INSTALLING THE ELEVATING CRANK. ONCE SCREW TOUCHES SHAFT, TIGHTEN ONLY 1/4 TURN MORE. SCREW SIMPLY HOLDS ELEVATING CRANK ON. DO NOT OVERTIGHTEN!

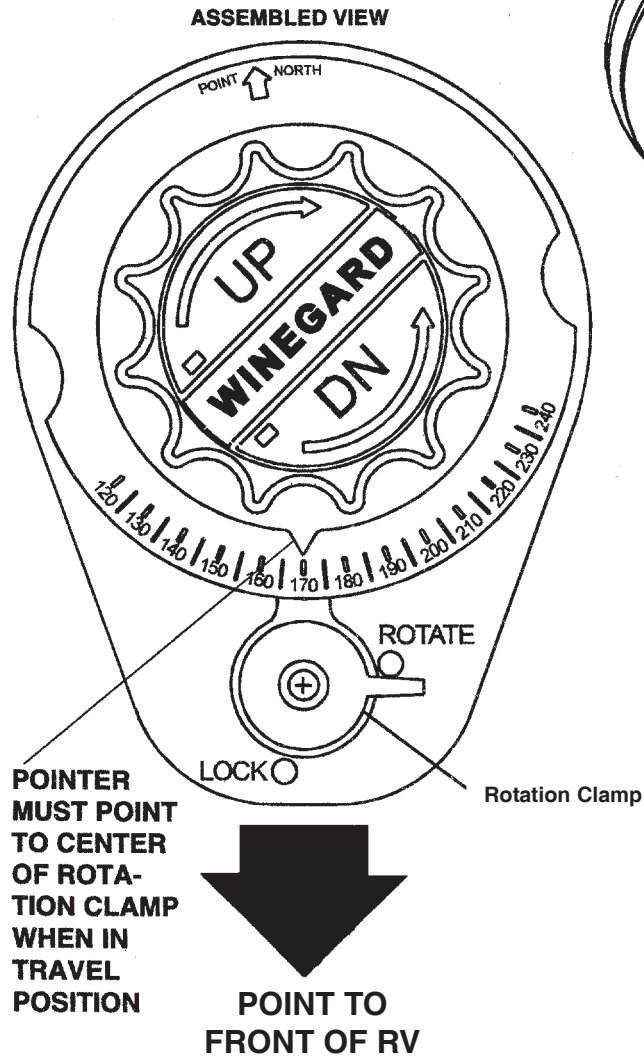
* The handle and extension should be glued together *after checking that you have the correct length*. The handle will not work properly if it is not glued together! (ABS glue is recommended; for your safety, use according to manufacturer's directions.)

ROOF THICKNESS	ELEVATING SHAFT LENGTH	W/RW-1000	DIRECTIONAL HANDLE LENGTH
4 3/4"	No Change	6 3/4"	5 1/2"
4 1/2"	6"	6 1/2"	5 1/4"
4 1/4"	5 3/4"	No Change	5"
4"	5 1/2"	6"	4 3/4"
3 3/4"	5 1/4"	5 3/4"	4 1/2"
3 1/2"	5"	5 1/2"	4 1/4"
3 1/4"	4 3/4"	5 1/4"	4"
3"	4 1/2"	5"	3 3/4"
2 3/4"	4 1/4"	4 3/4"	3 1/2"
2 1/2"	4"	4 1/2"	3 1/4"
2 1/4"	3 3/4"	4 1/4"	3"
2"	3 1/2"	4"	2 3/4"
1 3/4"	3 1/4"	3 3/4"	2 1/2"
1 1/2"	3"	3 1/2"	2 1/4"
1 1/4"	2 3/4"	3 1/4"	2"
1" min.	2 1/2"	3"	1 3/4"



CAUTION: AFTER INITIAL INSTALLATION THE ANTENNA SHOULD ONLY ROTATE APPROXIMATELY 180° IN EITHER DIRECTION. THE POINTER ON THE DIRECTIONAL HANDLE SHOULD POINT TOWARDS THE ROTATION CLAMP WHEN IN TRAVEL POSITION.

NOTE: 1. Rotate Stop. 2. Snap this part up into Ceiling Plate Assembly.



CAUTION: THE ANTENNA MUST BE IN THE TRAVEL POSITION BEFORE ALIGNING THE DIRECTIONAL HANDLE, AND CEILING PLATE.

Tighten screw snugly

