

WINEGARD®

RP-4400 ELEVATING SHAFT REPLACEMENT FOR RM CRANK-UP MODELS

Refer to drawing to identify parts.

STEP 1. Release spring at base of feed arm. (This allows you to remove elevating shaft and spring without the dish popping up.) Next, lower antenna to travel position.

STEP 2. Loosen set screw on elevating crank handle. Remove crank, #1, directional handle, #2 and extension, #3 (if used).

STEP 3. On roof of vehicle, unscrew plug, #4, from top of gear housing. Use 1/4" hex head nut driver and turn elevating shaft counter-clockwise to remove. Carefully pull out elevating shaft and spring assembly.

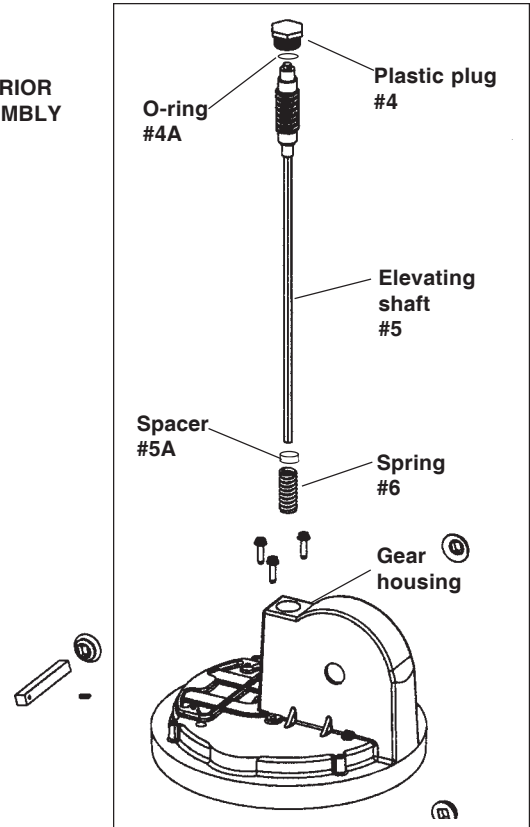
STEP 4. To replace elevating shaft, slide spacer #5A, spring, #6, onto elevating shaft, #5. Keep shaft in vertical position and slide into gear housing. You must match the hex shape of the elevating shaft with the hex-shaped hole in the gear inside the gear housing. Do not force. There will be some resistance as you slide the elevating shaft into the housing. Carefully push in until the top of the shaft is down in the top of the housing. Using 1" combination wrench, replace plug, #4, into top of housing.

STEP 5. Raise dish and reattach spring at base of feed arm.

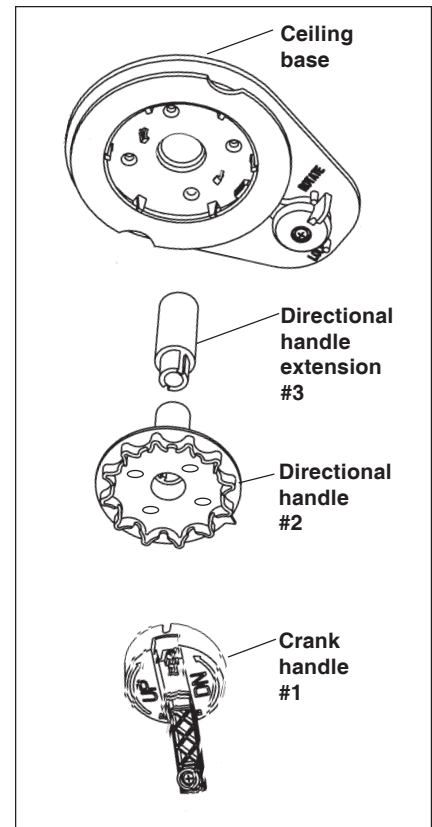
STEP 6. If necessary, adjust elevating shaft length before replacing directional handle, extensions (if used) and elevating crank handle. *See owner's manual for instructions.*

STEP 7. Replace directional handle, extensions (if used) and crank handle.

EXTERIOR ASSEMBLY



INTERIOR ASSEMBLY



Elevating shaft assembly

