

WINEGARD® Connect™

LONG RANGE, HIGH PERFORMANCE WIFI EXTENDER / WIFI EXTENDER + 4G LTE

WF1xT / 4G1xT

Installation / Operation Manual



DESIGNED SPECIFICALLY FOR
OVER THE ROAD TRUCKING



WF-150T



WF-200T



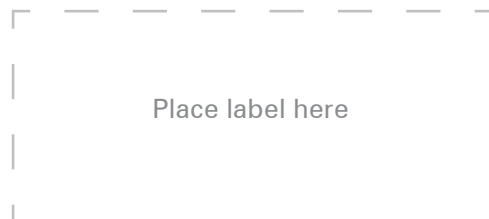
DESIGNED AND
MANUFACTURED IN
USA
SINCE 1953

Register your product at winegard.com/myantenna

For help, email help@winegard.com
or call 1-800-320-9992

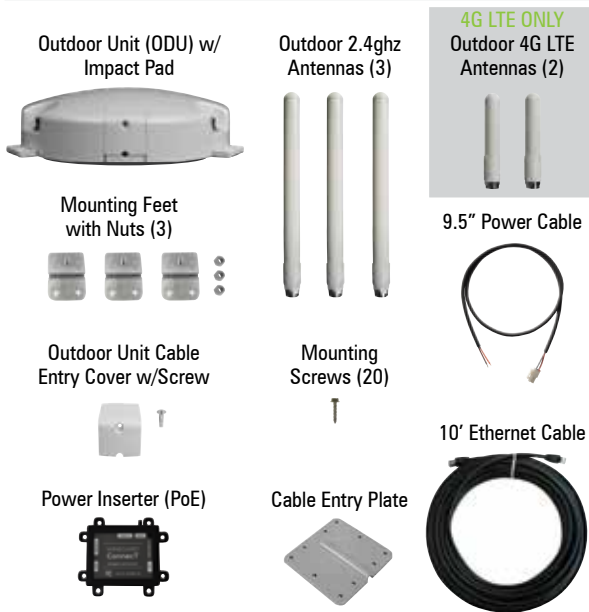
www.winegard.com/connect

Manuel disponible en français au www.winegard.com/connect
Manual disponible en español en www.winegard.com/connect



Place label here

PARTS LIST



WARNINGS:

- Read this manual carefully and completely before attempting to assemble, install or operate this product. Winegard recommends the installation of this equipment be done by a professional technician familiar with the vehicle in which it is installed. Batteries may expel explosive gases when not properly ventilated, therefore, special care and consideration is required if wiring directly to a battery. Winegard recommends wiring directly to a fused panel or fused box. Consult your vehicle manufacturer for additional information on safely installing accessories.
- Save these instructions.
- Do not use any other PoE device with this system. Failure to comply could cause damage to the product.
- Do not paint any portion of the Winegard® Connect™. Painting the system could damage the system and will void the warranty.
- Do not mount closer than 12 inches from the edge of the roof or any adjacent devices.
- Do not mount the outdoor unit (ODU) with the cable facing the front of the vehicle.
- 4G LTE service will not work in Mexico.

EXTERIOR INSTALLATION

- 1) Remove each antenna from the protective bag and screw it into the correct open port on the outdoor unit (ODU). *Figure 1.*
- 2) Firmly tighten each antenna by hand. If using a wrench, do not overtighten the antenna as the antennas or housing may become damaged. The antennas should be tightened to 20–25 inch pounds of torque.
- 3) Attach the mounting feet to the unit by threading the provided nuts to the post on the mounting feet. Tighten nuts using an 11/32" wrench. *Figure 1.*
- 4) Place the unit on the roof in the chosen location. Do not mount closer than 12 inches from the edge of the roof or any adjacent devices. Connect the 10 foot Ethernet cable to the ODU.* Ensure that the Ethernet cable exits the unit towards the back of the vehicle. *Figure 2.*
- 5) Using a 1/8" drill bit, pre-drill the holes for each of the screws to hold the mounting feet in place.
- 6) Add a small bead of manufacturer approved sealant (not provided) to each hole.
- 7) Drive the screws (6) through the sealant into each hole (6) until tight. Do not overtighten as it will cause the screw to strip. See NOTE on this page.
- 8) After the mounting feet (3) are secured, add a small amount of approved sealant around the edge of each mounting foot and over each screw.
- 9) Place cable entry cover on the ODU and secure using the provided screw.
- 10) Decide where the supplied PoE (Power over Ethernet) power inserter will be mounted inside the vehicle to determine the best location for the Ethernet cable to enter the vehicle. Drill a 3/4" hole through the roof and push the Ethernet cable into the vehicle. Make sure the cable is accessible from the area where the power inserter will be located.
- 11) Add a bead of sealant around the hole for the cable. Place the provided cable entry plate over the hole and cable. Secure cable entry plate in place using the supplied screws. Seal the plate and screws (10) with approved sealant.
- 12) Secure the cable to the roof every 12–16 inches to eliminate excessive cable movement. Seal the cable to the roof between the unit and cable entry plate. Cable clamps (*not provided*) may need to be used depending on the distance the cable runs across the roof.



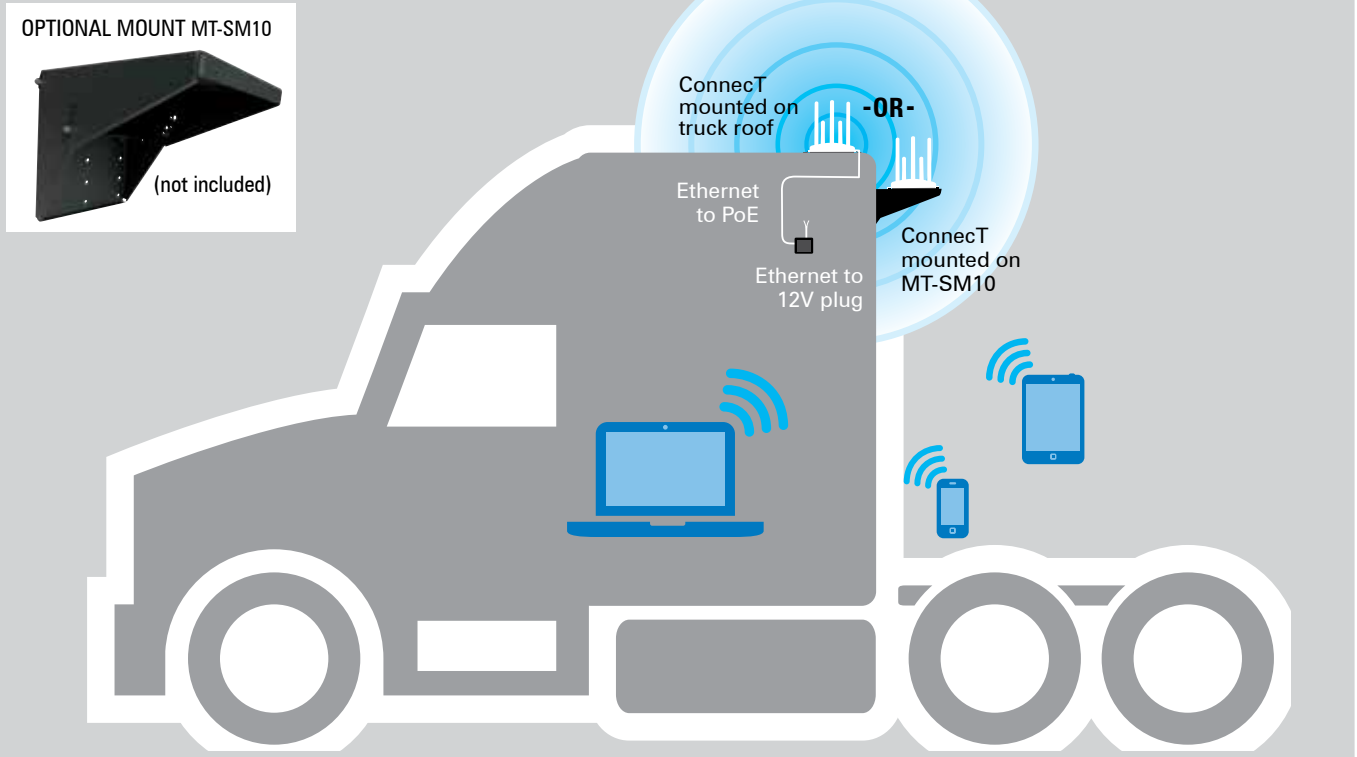
TIP: Clean the roof where the unit will be mounted to ensure a good seal.

NOTE: Before using the supplied mounting screws, check with the vehicle manufacturer for any special screw requirements.

*If you need longer Ethernet cable, please visit www.winegard.com/connect/ connect-parts to place an order.

EXTERIOR INSTALLATION (cont)

Figure 2



INTERIOR INSTALLATION

CAUTION: Before proceeding, be sure to shut off electricity in order to avoid electrical shock.

- 1) From the previously determined location for the PoE (Step 10 of Exterior Installation) connect the supplied 10' Ethernet cable from the outdoor antenna to the "To Antenna" connection on the PoE device. Ensure the cable is adequately secured to this port. *Figure 4.*
- 2) Connect the supplied 9.5" power cable into the "Power IN" port on the PoE. Again, ensure the cable is tightly secured to this port.
- 3) Next, connect the bare wire ends of the 9.5" power cable to an 18AWG power wire (*not supplied and must not exceed 50 feet*). Connect the red (Power) cables together and the black (Ground) cables together with wire connectors (*not included*). Wrap electrical tape (*not included*) around each wire connector down to the wire. Run the opposite end of the power cable to a dedicated 12VDC circuit with an in-line 3A fuse.
- 4) If connecting a device to the LAN port, run an Ethernet cable (*not provided*) from the LAN port on the PoE to the Ethernet connection on your device. Winegard recommends not using an Ethernet cable longer than 50 feet.
- 5) Lastly, there are 8 mounting eyelets on the PoE. We recommend using the remaining mounting screws (4), from the hardware pack, to mount the PoE to the desired location. To ensure eyelets don't break, do not overtighten screw.
- 6) Turn the power switch to the on position. The LED should light up.

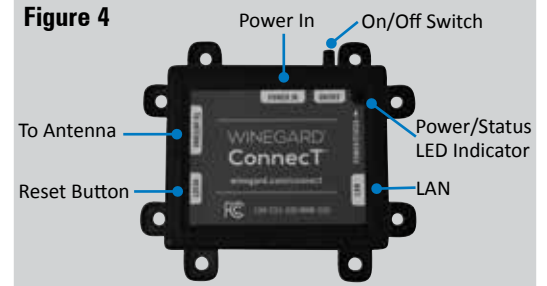
WARNING: Make sure no bare wire or wire strands are visible after making connections. Failure to properly install may make the unit inoperable and could even cause fire, explosion, personal injury or death.

Figure 3

PoE Wiring Requirements

- Supply voltage – 9-16V
- Output Voltage – 24V
- Max. operating current – 1A
- Max. operating temperature – 60C
- Max. power cable length –
18 gauge (recommended)– 50'
- LAN port – Max. Ethernet length –
CAT5e – 50'

Figure 4



OPERATION

NOTE: Winegard recommends using Chrome or Firefox for set-up.

WARNING: For first time users - On the initial setup, your Connect system may have to reconfigure the modem. If this occurs, please expect an additional 1-2 minutes of delay before the Connect can be used. Do not click the back button on your web browser when navigating through this software.

- 1) Turn on the WiFi enabled device that you want to connect and scan for wireless networks with this device.
- 2) The label located on the front of this manual lists the unique default SSID and password. Select this WiFi signal from the list of wireless networks and connect. Once the correct SSID has been selected, enter the password.

IMPORTANT: DO NOT LOSE THIS MANUAL. It contains your unique factory default SSID and password.

- 3) Once connected, open an Internet browser and type **10.11.12.1** into the address bar and press **Enter**. *Figure 5*. This will take you to the Admin Login Screen. Login using:

Username: **admin** Password: **admin**

The Winegard Connect 4G1xT can access the internet two different ways: from a local WiFi network or a 4G LTE network.

Figure 5

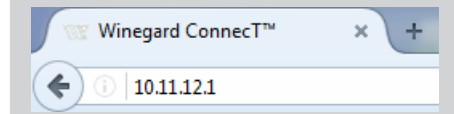


Figure 6

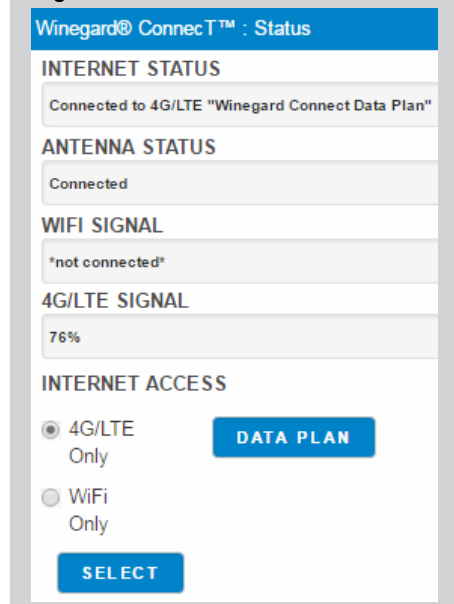


Figure 7

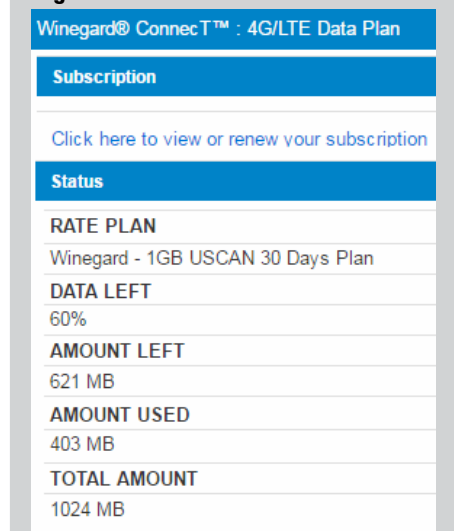
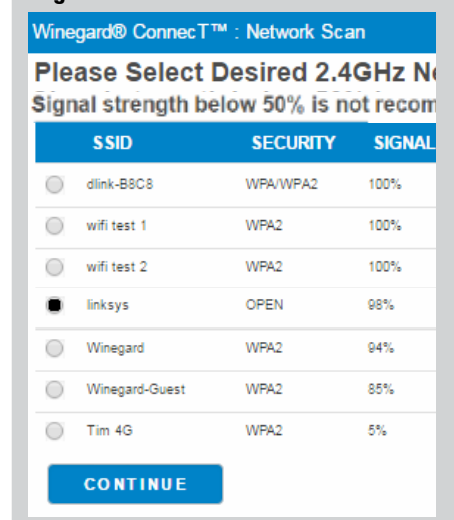


Figure 8



Winegard Connect 4G1xT ONLY

- 4) To connect to a 4G LTE network, select **4G LTE Only** from the internet access menu. Then click **SELECT**. *Figure 6*.

WARNING: Connecting to the internet through 4G LTE will use data from your Winegard Connect Data Plan.

- 5) To add data to the 4G1xT from the Status screen, select the **DATA PLAN** icon. Once on the data plan screen, you can see how much data you have remaining or click the link in the subscription field to view your current plan or purchase more data. *Figure 7*.

WARNING: In order to purchase data you must be connected to an internet source.

NOTE: Any changes made to your network settings may result in a temporary loss of all network connections for up to 1 minute while being applied. This includes switching from WiFi to 4G and from 4G to WiFi. During this temporary loss your device may switch to a local remembered WiFi network. This will not allow you to return to the Connect setup screens. If this happens manually reconnect to the Connect's SSID again from your device.

- 6) To connect to a WiFi network, select **WiFi Only** and then click on **SCAN FOR WiFi**. This will bring up a list of all WiFi signals in range (this could take a few minutes). The Winegard Connect will display available networks by signal strength. Select the desired network and click **CONTINUE**. *Figure 8*.
- 7) Enter the network password, if prompted. Once the Winegard Connect connects to the internet the **INTERNET STATUS** will show connected (this could take as long as two minutes). You are now ready to use the WiFi.

NOTE: Some networks will display a "splash page" when connecting instead of using a network password. When connecting to a network requiring a splash screen for multiple days, it may be necessary to clear your browser cache.

OPERATION (cont)

Most functions on the Winegard Connect are controlled from the Local Network Settings screen. From the Status Screen, select **LOCAL NETWORK SETTINGS** from the drop down menu and click **SELECT**. From here (Figure 9), it is possible to do any of the following:

Change (SSID) Network Name

NOTE: Any changes made to your network settings may result in a temporary loss of all network connections for up to 1 minute while the changes are applied.

It is recommended that you change the name of the IDU. This will improve the security of your network and make it easier to find with your WiFi enabled devices.

Change Network Password

To secure your network, it is suggested that you change the network password to something you can remember. The new password must be at least eight characters long.

Security Type

The Winegard Connect Security Type has been defaulted to WPA2-PSK (AES). Other options are available on this screen.

Guest Network

The Winegard Connect provides a simple way to set up an extra network that doesn't have access to the Status Screen. This allows you to provide guests with an easier password to use when accessing your network while still maintaining a secure system.

To set up a Guest Network:

- 1) Click on **ENABLE**. *Figure 10.*
- 2) Give the guest network an easily recognizable name. *Figure 10.*
- 3) Enter a password. If you use a simple password, it is recommended that the guest network be disabled when not in use. *Figure 10.*

Figure 9

Winegard® Connect™ : Settings

2.4 GHz Network Settings

LOCAL NETWORK SSID
Winegard2ghzE1B29C

PASSWORD (must be at least 8 chars)
.....

Hide Password:

SELECT SECURITY TYPE
WPA2-PSK (AES)

CHANNEL
11

Figure 10

2.4 GHz Guest Network Settings

ENABLE: DISABLE:

GUEST NETWORK SSID
WinegardGuestE17B8C

PASSWORD (must be at least 6 chars)
.....

Hide Password:

ADVANCED SETTINGS

Connected Devices

This displays the name of each device currently connected wirelessly to the Winegard Connect.

Change Network Address

WARNING: Do not change the Network Address unless instructed by Winegard Tech Support. Doing so may cause your system to not function properly.

Change Admin Password

It is not necessary to change the ADMIN PASSWORD, however, to change the password click on **CHANGE ADMIN PASSWORD** to bring up the new password screen. Enter the new password into the area for both PASSWORD and RE-ENTER PASSWORD. The password in each of these boxes must match.

NOTE: Do not use the existing WiFi password for the ADMIN PASSWORD.

UPDATING THE WINEGARD® CONNECT™ SOFTWARE

When first setting up the Winegard ConnectT it is recommended to check for software updates the first time the system is connected to an Internet signal. It is also recommended to check for updates every couple months for fixes and added features.

NOTE: To retain all passwords and name changes during updates, click "Keep Settings".

- 1) From the Status Screen, choose **UPDATE SOFTWARE** from the drop down menu and click **SELECT**.

NOTE: Updating the system software from the network will require the Winegard ConnectT to be connected to an internet source.

- 2) Once on the update software screen, click **CHECK FOR LATEST VERSION**. See Figure 11.
- 3) There will be a slight delay while the Winegard ConnectT compares the current software version to the latest available version. If you have the latest version there is no need to update the software, click **CANCEL**. If the check finds that you have older software, click **PROCEED** to update to the latest version. See Figure 12.
- 4) If you clicked **PROCEED**, the system will be unavailable for several minutes while the outdoor antenna resets. As it powers back on, the system will function normally.

NOTE: During this reset, your device may switch to a local remembered WiFi network. This will not allow you to return to the ConnectT setup screens. If this happens, simply reconnect manually to the ConnectT's SSID again from your device.

Return to Factory Defaults

To return to factory default, press the reset button located on the left side of the power inserter for 30 seconds. See Figure 4.

WARNING: All changes will be lost and unit will return to factory default SSID and password. To begin setup, please refer to quick start guide.

Maintenance: Periodically check the ODU to ensure all connections are tight. As with all electronics, cycle power every few days to keep things running smoothly.

WINEGARD® CONNECT™ SUPPORT

Troubleshooting

LED DEFINITION:

LED Off	System is powered down.
Solid Red	The Winegard ConnectT is booting up.
Slow Orange Blink	The Winegard PoE is searching for an ODU.
Fast Orange Blink	The Winegard PoE reset button was pressed for 10 seconds.
Slow Red Blink	The Winegard PoE is connected to something other than the ODU in the "To Antenna" port.
Fast Red Blink	The Winegard PoE reset button was pressed for more than 30 seconds.
Solid Green	The Winegard PoE has found the ODU and it is powered up.
Fast Green Blink	The Winegard PoE reset button was pressed for less than 10 seconds.
Alternating Green & Orange Blink	Power may have been removed during an update and the Winegard ODU is in rescue mode. Please contact Winegard at 1-800-320-9992.

Figure 11

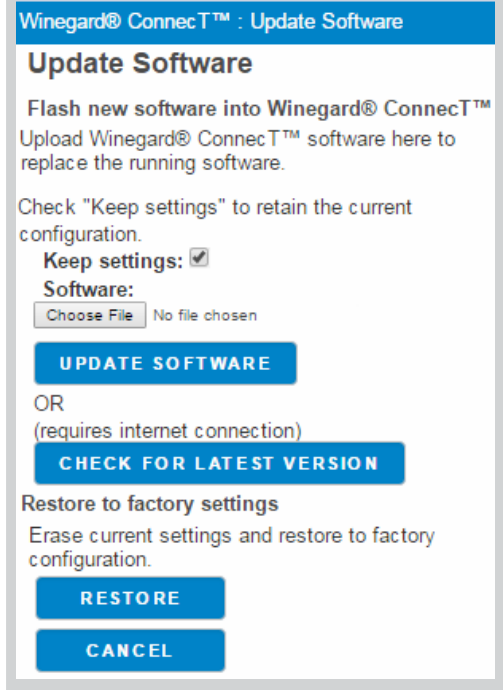
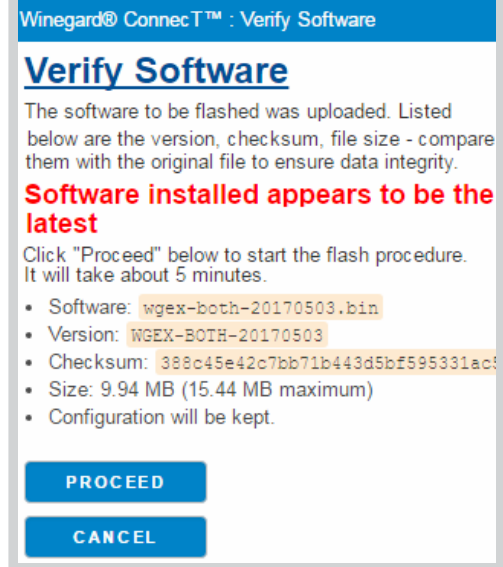


Figure 12



Troubleshooting

QUESTION	ANSWER
<i>Am I able to paint the Winegard Connect?</i>	Do not paint any portion of the WiFi extender. Painting the system could damage the system and will void the warranty.
<i>I have wired the PoE and turned the power button on, but I see no LED and I cannot access the Connect software.</i>	Confirm that you are supplying 9-16VDC to the PoE "Power In" port. The unit will not power on and no LED will be present if the voltage is too low. Next, check to make sure the power cable is connected correctly (Red to Power and Black to Ground) and not backwards.
<i>The system says that it is connected, why won't web pages load?</i>	Some WiFi sources do not require a password to connect but do require something before they will let you use their network. In these cases, they will often have a "SPLASH" page that requires you to either agree to their rules or enter a password before they will allow you to use their network. These pages will not always load on the web browser that you select but instead open on your devices default browser. Sometimes browsing to a web page will also bring up this splash page.
<i>The system keeps making me log in every time I try to change screens.</i>	Check to see if you have a second window open on the Winegard Connect status screen. Close this window and the problem should go away.
<i>I changed my password and nothing happened.</i>	The Winegard Connect will reject any password that is not long enough. Try entering a password of at least eight characters. This will improve the security of your devices.
<i>What if I lost my manual and/or cannot find my SSID or password?</i>	If you haven't changed your factory preset SSID or password you have 3 options to recover these: <ol style="list-style-type: none"> 1. Connect a laptop to the LAN connection on your PoE power inserter. Figure 4. This will allow you into the software. Once logged in, you will be able to recover your SSID and password on the Local Networks Settings tab. 2. On the edge of the ODU there will be a white label with your factory preset SSID and password. 3. Remove the 3 nuts from the 3 plastic feet. Lift the outdoor antenna from the 3 metal posts and the label containing this information will be on the bottom side containing this information will be on the bottom side. If you have changed your password you have 2 options: <ol style="list-style-type: none"> 1. Connect a laptop to the LAN connection on your PoE power inserter. Figure 4. This will allow you into the software. Once logged in, you will be able to recover your SSID and password on the Local Networks Settings tab. 2. Press and hold the reset button for 30 seconds located on the PoE (Figure 4). This will restore the unit to the original factory settings. Then you may log in using the factory SSID and password located on the front of this manual or on the ODU.
<i>What do I do if 10.11.12.1 does not bring up the login screen?</i>	One of several things has happened. The first thing to check is the WiFi signal that your model is connected to. If this is not the Winegard Connect SSID, this address isn't valid. If you are indeed connected to the correct network, the address may have been changed. To resolve this, press the reset button on the side of your PoE for 30 seconds. This will return the unit to its factory settings.
<i>My default SSID does not appear on my device when I search for it.</i>	When the Winegard Connect first powers on or has reset for any reason, it stops broadcasting the SSID. It may take between four and five minutes from the time it regained power to start broadcasting again.
<i>I changed my Winegard Connect SSID and was disconnected.</i>	This is normal. The old SSID that you were connected to is no longer valid, simply open your device's WiFi screen and search for the name you chose for your network. Select this and enter the password.
<i>I am connected to a network but the speed isn't very good.</i>	The Winegard Connect can only extend the signal range for what is available. Try moving closer to the source of the signal and logging on with your device directly. If the speed is still slow, try searching for another available network.
4G LTE ONLY	
<i>In the Data Plan page, my rate plans and other fields are showing "unknown".</i>	<ol style="list-style-type: none"> 1. Confirm that you have the most up-to-date software. 2. Log in to your account, click on "View Winegard Connect Subscriptions" to verify you have data. (You will have to be connected to the internet to view this).
<i>I have data but I am not able to connect to the internet. The Internet Status continuously says "Connecting 4G LTE Winegard Connect Data Plan".</i>	<ol style="list-style-type: none"> 1. Ensure that you have coverage in your location. To view the 4G LTE nationwide coverage map visit www.winegard.com/connect. 2. The Winegard Connect 4G will not work in Mexico. 3. Disconnect the Connect from power and wait 10 seconds before reconnecting.
<i>I am being billed every month and am not using the Winegard Connect.</i>	Log in to your account, click on "View Winegard Connect Subscriptions". Verify that auto renew is "Off".
<i>The system will not process my credit card.</i>	Verify that the billing address is the correct address associated with the credit card being used.

STATUS SCREEN MESSAGES:

<i>Connected to Wifi XXXX</i>	The Winegard® Connect™ unit is communicating with the source WiFi signal and working. If you are unable to connect to the internet, the source signal may have a problem.
<i>Scanning</i>	The Winegard Connect unit is looking for WiFi signals in range. This can take a few minutes. Once the unit is able to identify all of the signals, they will be listed and you will be able to choose one.
<i>Trying to Connect to Wifi XXXX</i>	You have selected a source signal and the Winegard Connect unit is attempting to connect to this source. Once connected, the message should change to "Connect to..."
<i>Logging into Wifi XXXX</i>	The source signal is password protected. This message will be displayed after you have entered the correct password and the two systems work out the security protocols.
<i>Bad Password</i>	The source signal is password protected. This message will be displayed after you have entered an incorrect password and the source system has rejected the connection. Generally this screen will only be seen if the source signal is distant or weak. Normally, the password will be rejected on the network password screen.
<i>Not Connected</i>	The Winegard Connect system is not connected to a network.
<i>Connecting to Wifi XXXX</i>	The Winegard Connect system is talking to the selected source signal and a connection is being made. This will generally only take a minute or two.

FCC STATEMENT

This device complies with Part 15 of the FCC Rules. Operation is subject to the following two conditions: (1) This device may not cause harmful interference, and (2) this device must accept any interference received, including interference that may cause undesired operation.

This equipment has been tested and found to comply with the limits for a Class B digital device, pursuant to Part 15 of the FCC Rules. These limits are designed to provide reasonable protection against harmful interference in a residential installation. This equipment uses and can radiate radio frequency energy and, if not installed and used in accordance with the instructions, may cause harmful interference to radio communications. However, there is no guarantee that interference will not occur in a particular installation. If this equipment does cause harmful interference to radio or television reception, which can be determined by turning the equipment off and on, the user is encouraged to try to correct the interference by one or more of the following methods:

- Reorient or relocate the receiving antenna.
- Increase the separation between the equipment and devices.
- Connect the equipment into an electrical outlet on a circuit different from that which the radio receiver is connected.
- Consult the dealer or an experienced radio/TV technician for help.

FCC Caution

Any changes or modifications not expressly approved by the party responsible for compliance could void the user's authority to operate this equipment.

Only channels 1–11 can be operated. Selection of other channels is not possible.

This device and its antenna(s) must not be co-located or operating in conjunction with any other antenna or transmitter.

FCC Radiation Exposure Statement

This equipment complies with FCC radiation exposure limits set forth for an uncontrolled environment. This equipment should be installed and operated with a minimum distance of 25 cm between the radiator and your body. This device and its antenna(s) must not be co-located or operating in conjunction with any other antenna or transmitter except in accordance with FCC multi-transmitter product procedures.

This device complies with FCC and Industry Canada license-exempt RSS standard(s). Operation is subject to the following two conditions: (1) this device may not cause interference, and (2) this device must accept any interference, including interference that may cause undesired operation of the device.

Le présent appareil est conforme à FCC et CNR d'Industrie Canada applicables aux appareils radio exempts de licence. L'exploitation est autorisée aux deux conditions suivantes : (1) l'appareil ne doit pas produire de brouillage, et (2) l'utilisateur de l'appareil doit accepter tout brouillage radioélectrique subi, même si le brouillage est susceptible d'en compromettre le fonctionnement.

**WINEGARD MOBILE PRODUCTS LIMITED WARRANTY
(2 YEARS PARTS; 1 YEAR LABOR)**

Winegard Company warrants this product against defects in materials or workmanship for a period of two (2) years from the date of original purchase. During year one (1) of such warranty, Winegard Company will also pay authorized labor costs to an authorized Winegard dealer to repair or replace defective products. No warranty claim will be honored unless at the time the claim is made, Customer presents proof of purchase to an authorized Winegard dealer (to locate the nearest authorized Winegard dealer, contact Winegard Company, 3000 Kirkwood Street, Burlington, Iowa 52601, Telephone 800-288-8094 or visit www.winegard.com). Customer must provide proof of purchase with a dated sales receipt for the Winegard product to verify the product is under warranty. If the date of purchase cannot be verified, the warranty period shall be considered to begin thirty (30) days after the date of manufacture.

If a defect in material or workmanship is discovered, Customer may take the product to an authorized Winegard dealer for service. Customer must provide proof of purchase to verify the product is under warranty. If the product is brought to an authorized Winegard dealer for service prior to expiration of year one (1) of the warranty period and a defect in material or workmanship is verified by Winegard Technical Services, Winegard Company will cover the Winegard dealer's labor charges for warranty service. The Winegard dealer must contact Winegard Technical Services in advance for pre-approval of the service. Approval of the service is at the sole discretion of Winegard Company.

Alternatively, Customer may ship the product prepaid to Winegard Technical Services (located at 2736 Mt. Pleasant Street, Burlington, Iowa 52601, Telephone 800-788-4417). Customer must return the product along with a brief description of the problem and provide Winegard Technical Services with Customer's name, address, and phone number. Customer must also provide proof of purchase to verify the product is under warranty. If the product is returned before the expiration of the warranty period, Winegard Company will (at its option) either repair or replace the product.

This Limited Warranty does not apply if the product has been damaged, deteriorates, malfunctions or fails from: improper installation, misuse, abuse, neglect, accident, tampering, modification of the product as originally manufactured by Winegard in any manner whatsoever, removing or defacing any serial number, usage not in accordance with product instructions or acts of nature such as damage caused by wind, lightning, ice or corrosive environments such as salt spray and acid rain. This Limited Warranty also does not apply if the product becomes unable to perform its' intended function in any way as a result of the television signal provider making any changes in technology or service.

RETURN AUTHORIZATION POLICY

A Return Material Authorization (RMA) is required prior to returning any product to Winegard Company or Winegard Warranty Services under this warranty policy. Please call our Technical Services Department at 800-788-4417 or send an email to warranty@winegard.com to obtain the RMA number. Please furnish the date of purchase when requesting an RMA number. Enclose the product in a prepaid package and write the RMA number in large, clear letters on the outside of the package. To avoid confusion or misunderstanding, a shipment(s) without an RMA number(s) or an unauthorized return(s) will be refused and returned to Customer freight collect.

WINEGARD COMPANY DOES NOT ASSUME ANY LIABILITIES FOR ANY OTHER WARRANTIES, EXPRESS OR IMPLIED, MADE BY ANY OTHER PERSON.

ALL OTHER WARRANTIES WHETHER EXPRESS, IMPLIED OR STATUTORY INCLUDING WARRANTIES OF FITNESS FOR A PARTICULAR PURPOSE AND MERCHANTABILITY ARE LIMITED TO THE TWO YEAR PERIOD OF THIS WARRANTY.

In states that do not allow limitations on implied warranties, or the exclusion of limitation of incidental or consequential damages, the above limitations or exclusions do not apply.

Some states do not allow limitations on how long an implied warranty lasts, or the exclusion of limitation of incidental or consequential damages, so the above limitations or exclusions may not apply to you.

This warranty gives Customer specific legal rights. Customer may also have other rights that may vary from state to state.

WS-MOBWARREV3
Rev. 10/14